

New York State Electric & Gas Corporation

Jennison Transmission Solution Project

Exhibit 4

Environmental Impacts

Part 6 of 9

New York State Electric & Gas Corporation

Jennison Transmission Solution Project

Exhibit 4

Environmental Impacts

Figure 4-6

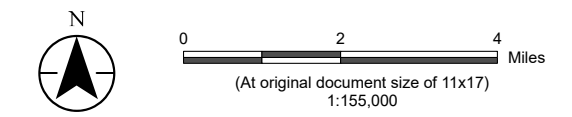
Delineated Wetlands and Streams

This page intentionally left blank.

Jennison Transmission Solution Project

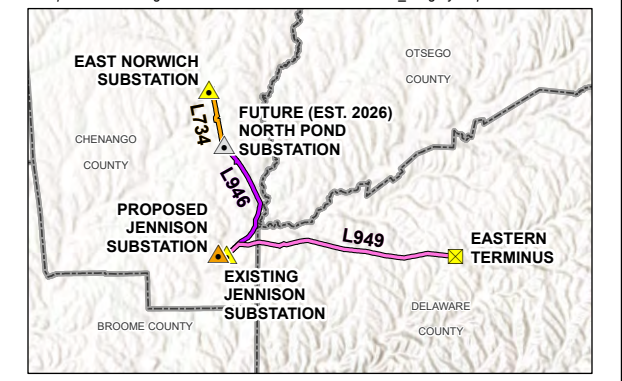
- Eastern Terminus
- Substation, Existing
- Substation, Future
- Substation, Proposed
- Proposed Right-of-Way

- Road or Highway**
- Interstate
 - U.S. or State Highway
 - Secondary State or County Highway
 - City or Town Boundary
 - County Boundary
 - Village Boundary



Notes

1. Coordinate System: NAD 1983 StatePlane New York Central FIPS 3102 Feet
2. Data Sources: NYSEG Data, 2024; Stantec, Inc. Field Data, 2023; USGS Elevation Contours, The National Map, 2024; USGS National Hydrography Dataset, 2024; Esri North American Detailed Streets, 2012; NYS OITS GIS Program Office (GPO) Civil Boundaries, 2018
3. Background: Mapsheet Index - USGS Topo (The National Map): <https://basemap.nationalmap.gov/arcgis/rest/services/USGSTopo/MapServer>
Mapsheets: Esri World Imagery https://services.arcgisonline.com/ArcGIS/rest/services/World_Imagery/MapServer



Project Location
Chenango, Delaware, & Otsego Counties, NY

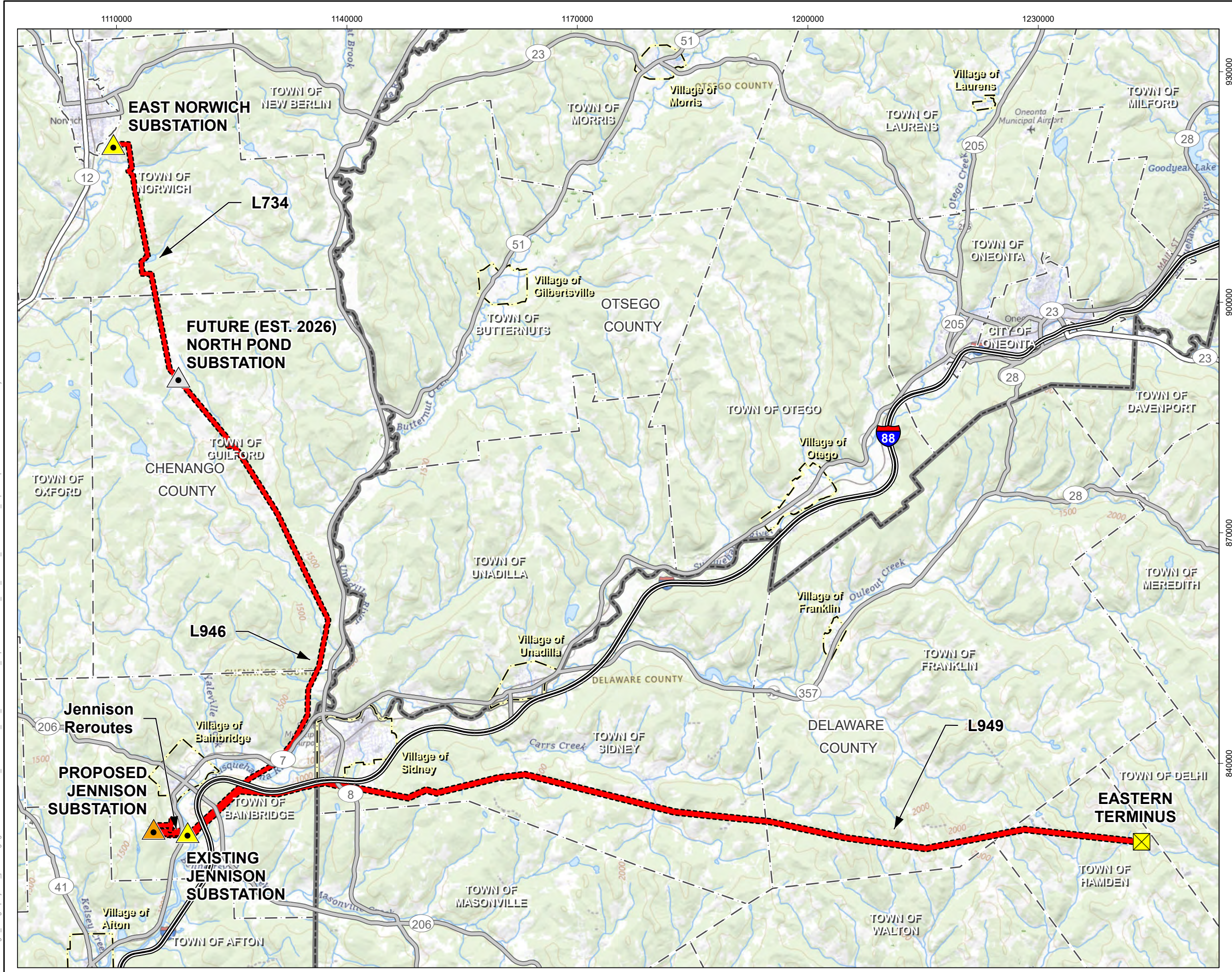
Prepared by AB on 2024-02-08
TR by DG on 2024-07-30
IR by AS on 2024-10-18

Client/Project
Jennison Transmission Solution Project
NYSEG CLCPA Program

213415070 REVA

Figure No.
4-6

Title
**Delineated Wetlands & Streams
Mapsheet Index**

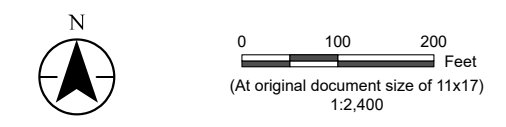


U:\213415070\gis_cad\gis\project1\permitting\figure\Antioch\VIII\Exhibit_4\213415070_JTS_Exhibit_Environmental_Impacts.aprx Revised: 2024-11-11 By: abhattaral



Jennison Transmission Solution Project

- Substation Boundary
- Proposed Right-of-Way
- Field-Delineated Feature**
- Delineated Stream Line
- Wetland Continuation Line
- Delineated Wetland – Non-Jurisdiction
- Mapsheet Match Line
- City or Town Boundary
- Road or Highway**
- Local, Neighborhood, Rural or City Street



Notes
 1. Data Sources: See Figure 4-6 Mapsheet Index notes

Project Location
 Chenango, Delaware, & Otsego Counties, NY

Client/Project
 Jennison Transmission Solution Project
 NYSEG CLCPA Program

Prepared by AB on 2024-02-08
TR by DG on 2024-07-30
IR by AS on 2024-10-18

213415070 REVA

Figure No.
4-6

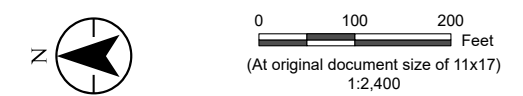
Title
**Delineated Wetlands & Streams
 Mapsheet 1 of 102**

U:\213415070\gis_cad\gis\project1\permitting\figure\Antiole\11\Exhibit_4\213415070_JTS_Environmental_Impacts\1213415070_JTS_Environmental_Impacts.aprx Revised: 2024-11-11 By: abhattalari



Jennison Transmission Solution Project

- Proposed Right-of-Way
- Field-Delineated Feature**
- Wetland Continuation Line
- Delineated Wetland – Non-Jurisdiction
- Mapsheet Match Line



Notes
 1. Data Sources: See Figure 4-6 Mapsheet Index notes

Project Location
 Chenango, Delaware, & Otsego Counties, NY

Client/Project
 Jennison Transmission Solution Project
 NYSEG CLCPA Program

Prepared by AB on 2024-02-08
 TR by DG on 2024-07-30
 IR by AS on 2024-10-18

213415070 REVA

Figure No.
4-6

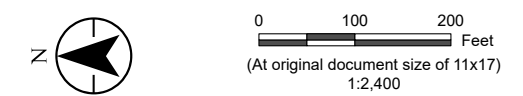
Title
Delineated Wetlands & Streams
Mapsheet 2 of 102

U:\213415070\gis_cad\gis\project1\permitting\figure\Antiole\11\Exhibit_4\213415070_JTS_Environmental_Impacts.aprx Revised: 2024-11-11 By: abhattalal



Jennison Transmission Solution Project

- Proposed Right-of-Way
- Field-Delineated Feature**
 - Ditch
 - Delineated Stream Line
 - Delineated Stream
- Mapsheet Match Line
- Road or Highway**
 - Local, Neighborhood, Rural or City Street



Notes
 1. Data Sources: See Figure 4-6 Mapsheet Index notes

Project Location
 Chenango, Delaware, & Otsego Counties, NY

Client/Project
 Jennison Transmission Solution Project
 NYSEG CLCPA Program

Prepared by AB on 2024-02-08
 TR by DG on 2024-07-30
 IR by AS on 2024-10-18

Client/Project 213415070 REVA

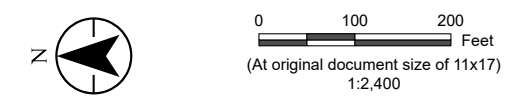
Figure No.
4-6

Title
Delineated Wetlands & Streams
Mapsheet 3 of 102

U:\213415070\gis_cad\gis\project1\permitting\figure\Article VII\Exhibit_4\213415070_JTS_Environmental_Impacts.aprx Revised: 2024-11-11 By: abhattaral



- Jennison Transmission Solution Project**
- Proposed Right-of-Way
 - Field-Delineated Feature**
 - Wetland Continuation Line
 - Delineated Wetland – Federal Jurisdiction
 - Mapsheet Match Line



Notes
 1. Data Sources: See Figure 4-6 Mapsheet Index notes

Project Location
 Chenango, Delaware, & Otsego Counties, NY

Client/Project
 Jennison Transmission Solution Project
 NYSEG CLCPA Program

Figure No.
4-6

Title
**Delineated Wetlands & Streams
 Mapsheet 4 of 102**

Prepared by AB on 2024-02-08
 TR by DG on 2024-07-30
 IR by AS on 2024-10-18

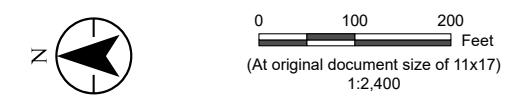
213415070 REVA

U:\213415070\gis_cad\gis_project1\permitting\figure\Antiole\11\Exhibit_4\213415070_JTS_Environmental_Impacts\1213415070_JTS_Environmental_Impacts.aprx Revised: 2024-11-11 By: abhattalal



Jennison Transmission Solution Project

- Proposed Right-of-Way
- Field-Delineated Feature**
- Wetland Continuation Line
- Delineated Wetland – Federal/State Jurisdiction
- Delineated Wetland – Non-Jurisdiction
- Mapsheet Match Line
- Road or Highway**
- Local, Neighborhood, Rural or City Street



Notes
 1. Data Sources: See Figure 4-6 Mapsheet Index notes

Project Location
 Chenango, Delaware, & Otsego Counties, NY

Client/Project
 Jennison Transmission Solution Project
 NYSEG CLCPA Program

Prepared by AB on 2024-02-08
 TR by DG on 2024-07-30
 IR by AS on 2024-10-18

Client/Project 213415070 REVA

Figure No.
4-6

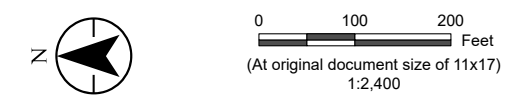
Title
Delineated Wetlands & Streams
Mapsheet 5 of 102

U:\213415070\gis_cad\gis\project1\permitting\figure\Antiole\VIII\Exhibit_4\213415070_JTS_Environmental_Impacts.aprx Revised: 2024-11-11 By: abhattalari



Jennison Transmission Solution Project

- Proposed Right-of-Way
- Field-Delineated Feature**
- Delineated Stream Line
- Wetland Continuation Line
- Delineated Wetland – Federal/State Jurisdiction
- Mapsheet Match Line
- Road or Highway**
- Local, Neighborhood, Rural or City Street



Notes
 1. Data Sources: See Figure 4-6 Mapsheet Index notes

Project Location
 Chenango, Delaware, & Otsego Counties, NY

Client/Project
 Jennison Transmission Solution Project
 NYSEG CLCPA Program

Figure No.
4-6

Title

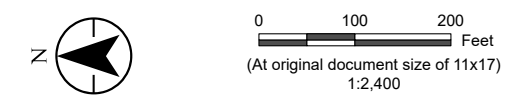
**Delineated Wetlands & Streams
 Mapsheet 6 of 102**

U:\213415070\gis_cad\gis\project1\permitting\figure\Antiole\VI\Exhibit_4\213415070_JTS_Environmental_Impacts\213415070_JTS_Exhibit_Environmental_Impacts.aprx Revised: 2024-11-11 By: abhattalari



Jennison Transmission Solution Project

- Proposed Right-of-Way
- Field-Delineated Feature**
- Delineated Stream Line
- Wetland Continuation Line
- Delineated Wetland – Federal/State Jurisdiction
- Mapsheet Match Line
- Road or Highway**
- Local, Neighborhood, Rural or City Street



Notes
 1. Data Sources: See Figure 4-6 Mapsheet Index notes

Project Location
 Chenango, Delaware, & Otsego Counties, NY

Client/Project
 Jennison Transmission Solution Project
 NYSEG CLCPA Program

Figure No.
4-6

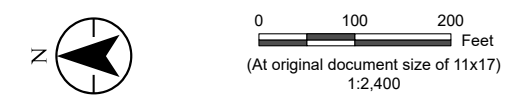
Title
**Delineated Wetlands & Streams
 Mapsheet 7 of 102**

U:\213415070\gis_cad\gis_project1\permitting\figure\Antiole\VIII\Exhibit_4\213415070_JTS_Environmental_Impacts.aprx Revised: 2024-11-11 By: abhattaral



Jennison Transmission Solution Project

- Proposed Right-of-Way
- Field-Delineated Feature**
- Delineated Stream - State Protected (Class, Standard)
- Mapsheet Match Line
- Road or Highway**
- Local, Neighborhood, Rural or City Street



Notes
 1. Data Sources: See Figure 4-6 Mapsheet Index notes

Project Location
 Chenango, Delaware, & Otsego Counties, NY

Prepared by AB on 2024-02-08
TR by DG on 2024-07-30
IR by AS on 2024-10-18

Client/Project
 Jennison Transmission Solution Project
 NYSEG CLCPA Program

213415070 REVA

Figure No.
4-6

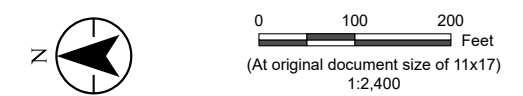
Title
**Delineated Wetlands & Streams
 Mapsheet 8 of 102**

U:\213415070\gis_cad\gis\project1\permitting\figure\Antioch\VIII\Exhibit_4\213415070_JTS_Environmental_Impacts.aprx Revised: 2024-11-11 By: abhattalari



Jennison Transmission Solution Project

- Proposed Right-of-Way
- Field-Delineated Feature**
- Delineated Stream Line
- Wetland Continuation Line
- Delineated Wetland – Federal Jurisdiction
- Delineated Wetland – Non-Jurisdiction
- Mapsheet Match Line
- Road or Highway**
- Local, Neighborhood, Rural or City Street



Notes
 1. Data Sources: See Figure 4-6 Mapsheet Index notes

Project Location
 Chenango, Delaware, & Otsego Counties, NY

Client/Project
 Jennison Transmission Solution Project
 NYSEG CLCPA Program

Prepared by AB on 2024-02-08
 TR by DG on 2024-07-30
 IR by AS on 2024-10-18

Client/Project 213415070 REVA

Figure No.
4-6

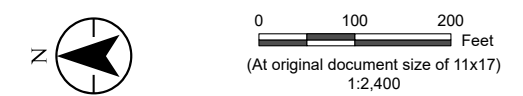
Title
**Delineated Wetlands & Streams
 Mapsheet 9 of 102**

U:\213415070\gis_cad\gis\project1\permitting\figure\Antiole\VIII\Exhibit_4\213415070_JTS_Environmental_Impacts.aprx Revised: 2024-11-11 By: abhattaral



Jennison Transmission Solution Project

- Proposed Right-of-Way
- Field-Delineated Feature**
- Ditch
- Wetland Continuation Line
- Delineated Stream
- Delineated Wetland – Federal Jurisdiction
- Mapsheet Match Line
- City or Town Boundary
- Road or Highway**
- Local, Neighborhood, Rural or City Street



Notes
 1. Data Sources: See Figure 4-6 Mapsheet Index notes

Project Location
 Chenango, Delaware, & Otsego Counties, NY

Client/Project
 Jennison Transmission Solution Project
 NYSEG CLCPA Program

Prepared by AB on 2024-02-08
 TR by DG on 2024-07-30
 IR by AS on 2024-10-18

Client/Project 213415070 REVA

Figure No.
4-6

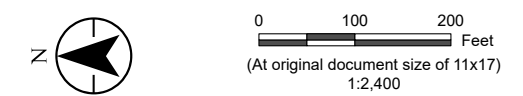
Title
**Delineated Wetlands & Streams
 Mapsheet 10 of 102**

U:\213415070\gis_cad\gis_project1\permitting\figure\Article VII\Exhibit_4\213415070_JTS_Environmental_Impacts\213415070_JTS_Environmental_Impacts.aprx Revised: 2024-11-11 By: abhattalari



Jennison Transmission Solution Project

- Proposed Right-of-Way
- Field-Delineated Feature**
- Delineated Stream Line
- Wetland Continuation Line
- Delineated Stream
- Delineated Wetland – Federal Jurisdiction
- Mapsheet Match Line



Notes
 1. Data Sources: See Figure 4-6 Mapsheet Index notes

Project Location
 Chenango, Delaware, & Otsego Counties, NY

Client/Project
 Jennison Transmission Solution Project
 NYSEG CLCPA Program

Prepared by
 AB on 2024-02-08
 TR by DG on 2024-07-30
 IR by AS on 2024-10-18

Client/Project
 213415070 REVA

Figure No.
4-6

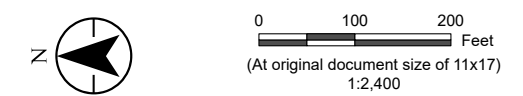
Title
Delineated Wetlands & Streams
Mapsheet 11 of 102

U:\213415070\gis_cad\gis\project1\permitting\figure\Antiole\11\Exhibit_4\213415070_JTS_Environmental_Impacts\13415070_JTS_Environmental_Impacts.aprx Revised: 2024-11-11 By: abhattalari



Jennison Transmission Solution Project

- Proposed Right-of-Way
- Field-Delineated Feature**
- Delineated Stream Line
- Wetland Continuation Line
- Delineated Stream
- Delineated Wetland – Federal Jurisdiction
- Delineated Wetland – Non-Jurisdiction
- Mapsheet Match Line



Notes
 1. Data Sources: See Figure 4-6 Mapsheet Index notes

Project Location
 Chenango, Delaware, & Otsego Counties, NY

Client/Project
 Jennison Transmission Solution Project
 NYSEG CLCPA Program

Figure No.
4-6

Title
**Delineated Wetlands & Streams
 Mapsheet 12 of 102**

Prepared by AB on 2024-02-08
 TR by DG on 2024-07-30
 IR by AS on 2024-10-18

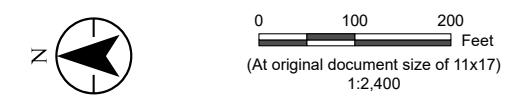
213415070 REVA

U:\213415070\gis_cad\gis_project1\permitting\figure\Antioe\11\Exhibit_4\213415070_JTS_Environmental_Impacts.aprx Revised: 2024-11-11 By: abhattaral



Jennison Transmission Solution Project

- Proposed Right-of-Way
- Field-Delineated Feature**
- Culvert
- Ditch
- Delineated Stream Line
- Wetland Continuation Line
- Delineated Wetland – Federal Jurisdiction
- Mapsheet Match Line
- Road or Highway**
- Local, Neighborhood, Rural or City Street



Notes
 1. Data Sources: See Figure 4-6 Mapsheet Index notes

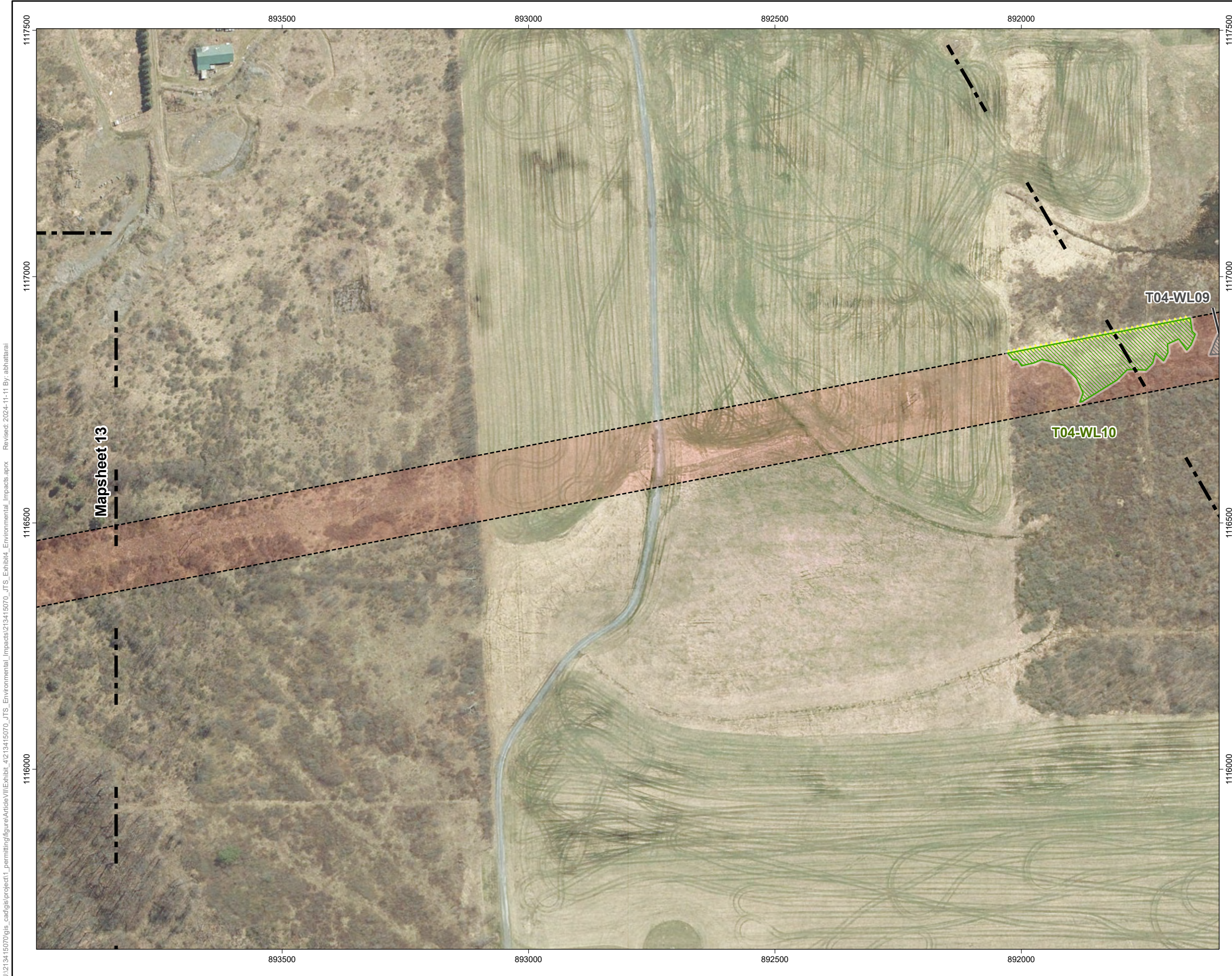
<i>Project Location</i> Chenango, Delaware, & Otsego Counties, NY	<i>Prepared by</i> AB on 2024-02-08 TR by DG on 2024-07-30 IR by AS on 2024-10-18
<i>Client/Project</i> Jennison Transmission Solution Project NYSEG CLCPA Program	<i>213415070 REVA</i>

Figure No.
4-6






Title

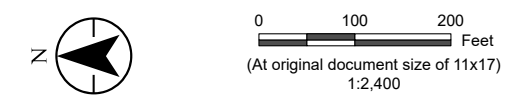
**Delineated Wetlands & Streams
 Mapsheet 13 of 102**

U:\213415070\gis_cad\gis_project1\permitting\figure\Article\11\Exhibit_4\213415070_JTS_Environmental_Impacts.aprx Revised: 2024-11-11 By: abhattaral



Jennison Transmission Solution Project

-  Proposed Right-of-Way
- Field-Delineated Feature**
-  Wetland Continuation Line
-  Delineated Wetland – Federal Jurisdiction
-  Delineated Wetland – Non-Jurisdiction
-  Mapsheet Match Line



Notes
 1. Data Sources: See Figure 4-6 Mapsheet Index notes

Project Location
 Chenango, Delaware, & Otsego Counties, NY

Client/Project
 Jennison Transmission Solution Project
 NYSEG CLCPA Program

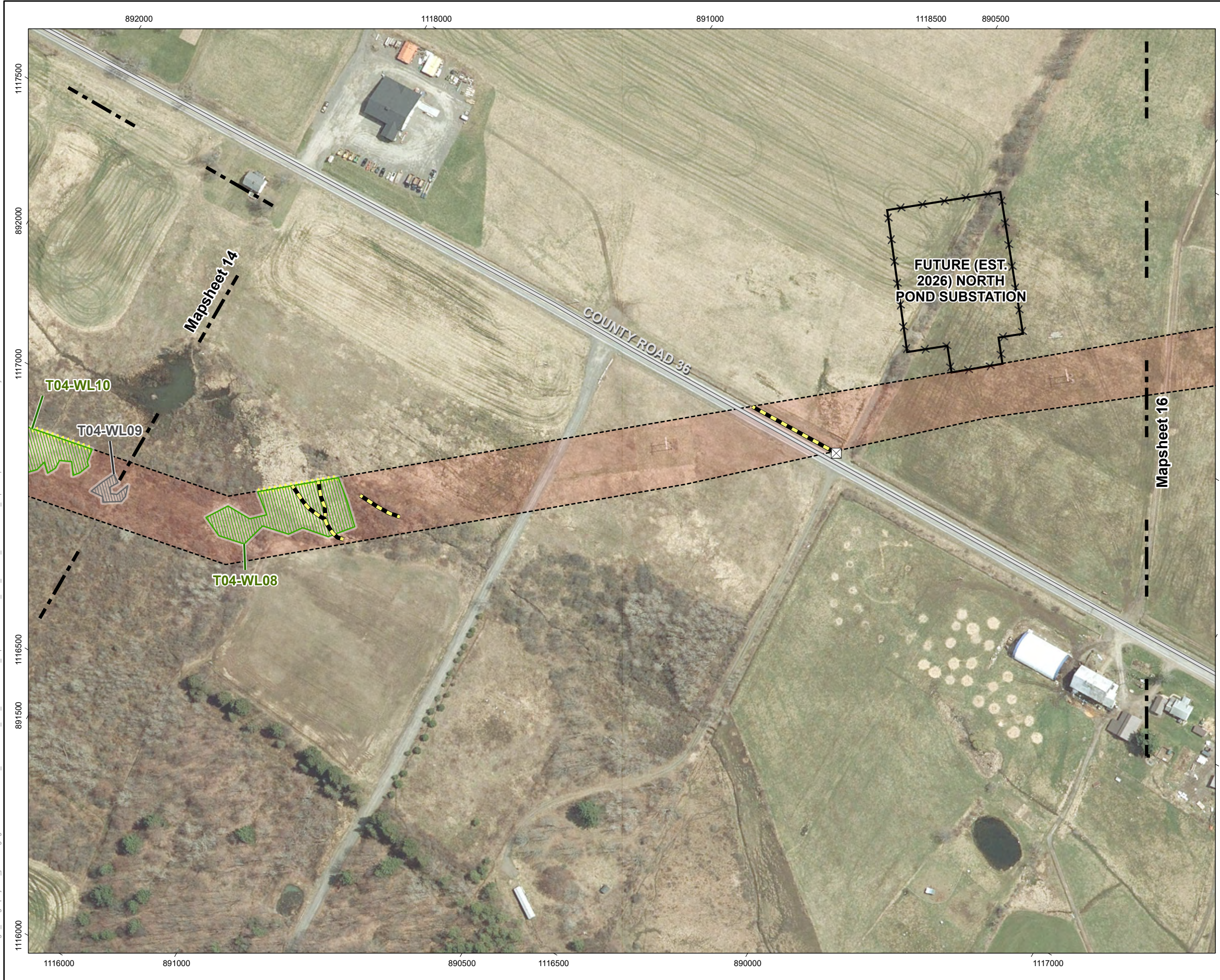
Figure No.
4-6

Title
**Delineated Wetlands & Streams
 Mapsheet 14 of 102**

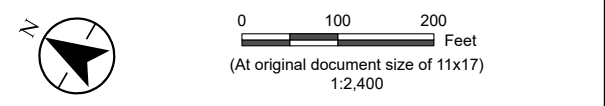
Prepared by AB on 2024-02-08
 TR by DG on 2024-07-30
 IR by AS on 2024-10-18

213415070 REVA

U:\213415070\gis_cad\gis_project1\permitting\figure\Antioe\VIII\Exhibit_4\213415070_JTS_Environmental_Impacts.aprx Revised: 2024-11-11 By: abhattaral



- Jennison Transmission Solution Project**
- Substation Boundary
 - Proposed Right-of-Way
- Field-Delineated Feature**
- Culvert
 - Ditch
 - Wetland Continuation Line
 - Delineated Wetland – Federal Jurisdiction
 - Delineated Wetland – Non-Jurisdiction
- Mapsheet Match Line**
- Mapsheet Match Line
- Road or Highway**
- Local, Neighborhood, Rural or City Street



Notes
 1. Data Sources: See Figure 4-6 Mapsheet Index notes

Project Location
 Chenango, Delaware, & Otsego Counties, NY

Client/Project
 Jennison Transmission Solution Project
 NYSEG CLCPA Program

Prepared by AB on 2024-02-08
 TR by DG on 2024-07-30
 IR by AS on 2024-10-18

Client/Project 213415070 REVA

Figure No.
4-6

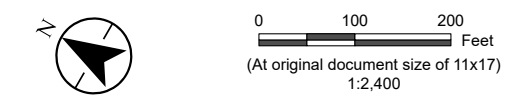
Title
Delineated Wetlands & Streams
Mapsheet 15 of 102

U:\213415070\gis_cad\gis_project1\permitting\figure\Antioe\VII\Exhibit_4\213415070_JTS_Environmental_Impacts\Impacts.aprx Revised: 2024-11-11 By: abhattaral



Jennison Transmission Solution Project

- Proposed Right-of-Way
- Field-Delineated Feature**
- Wetland Continuation Line
- Delineated Stream
- Delineated Wetland – Federal Jurisdiction
- Mapsheet Match Line
- Road or Highway**
- Local, Neighborhood, Rural or City Street



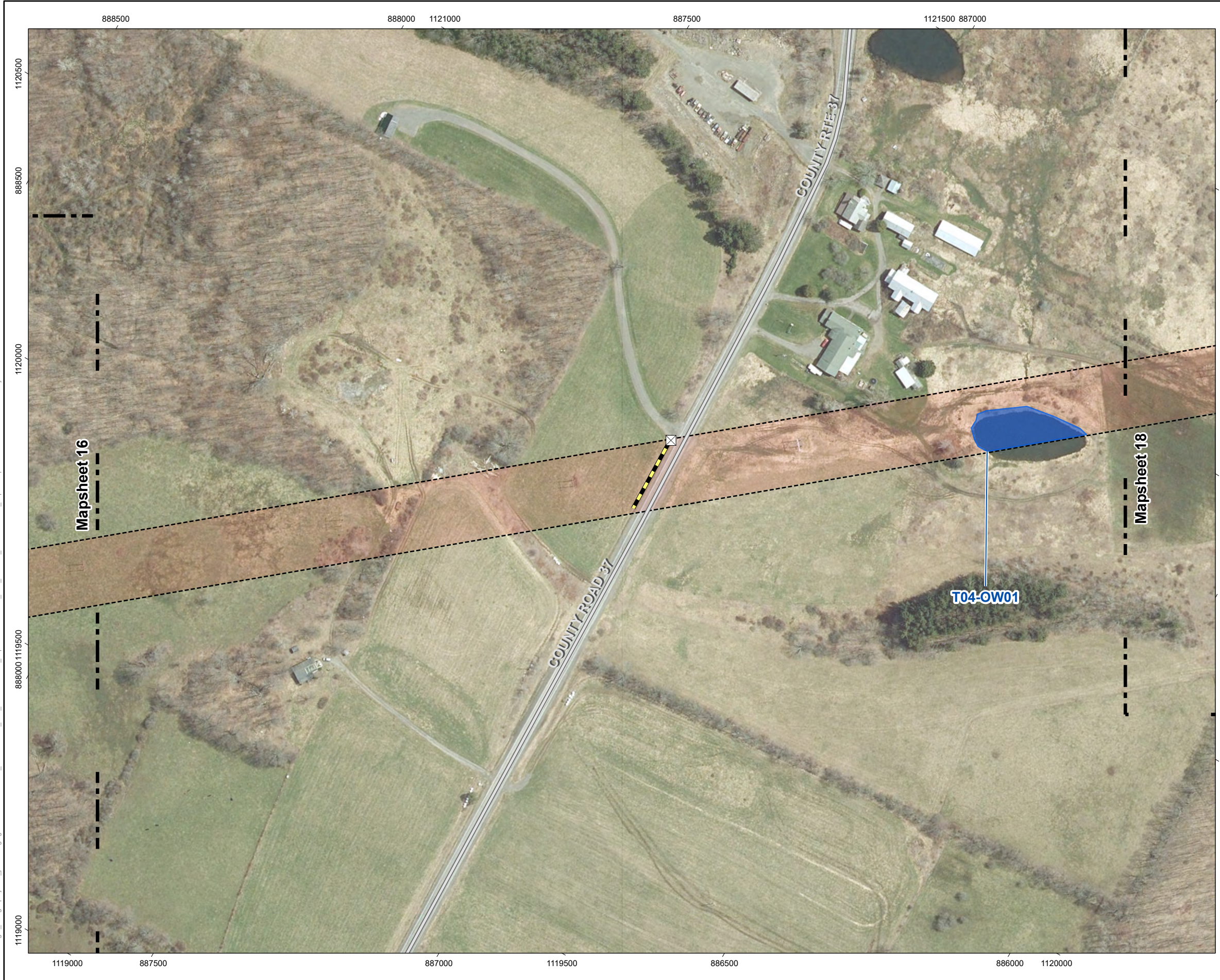
Notes
 1. Data Sources: See Figure 4-6 Mapsheet Index notes

<i>Project Location</i> Chenango, Delaware, & Otsego Counties, NY	<i>Prepared by</i> AB on 2024-02-08 TR by DG on 2024-07-30 IR by AS on 2024-10-18
<i>Client/Project</i> Jennison Transmission Solution Project NYSEG CLCPA Program	213415070 REVA

Figure No.
4-6

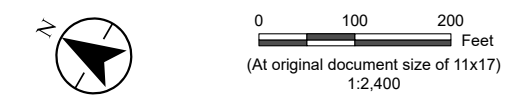
Title
**Delinedated Wetlands & Streams
Mapsheet 16 of 102**

U:\213415070\gis_cad\gis\project1\permitting\figure\Article VIII\Exhibit_4\213415070_JTS_Environmental_Impacts\aprx_2024-11-11 By: abhattaral



Jennison Transmission Solution Project

- Proposed Right-of-Way
- Field-Delineated Feature**
 - Culvert
 - Ditch
 - Delineated Open Water
 - Mapsheet Match Line
- Road or Highway**
 - Local, Neighborhood, Rural or City Street



Notes
 1. Data Sources: See Figure 4-6 Mapsheet Index notes

Project Location
 Chenango, Delaware, & Otsego Counties, NY

Client/Project
 Jennison Transmission Solution Project
 NYSEG CLCPA Program

Prepared by AB on 2024-02-08
 TR by DG on 2024-07-30
 IR by AS on 2024-10-18

213415070 REVA





Figure No.
4-6

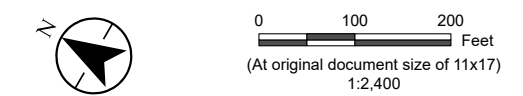
Title
Delineated Wetlands & Streams
Mapsheet 17 of 102

U:\213415070\gis_cad\gis\project1\permitting\figure\Antioch\11\Exhibit_4\213415070_JTS_Environmental_Impacts.aprx Revised: 2024-11-11 By: abhattaral



Jennison Transmission Solution Project

-  Proposed Right-of-Way
- Field-Delineated Feature**
-  Wetland Continuation Line
-  Delineated Wetland – Non-Jurisdiction
-  Mapsheet Match Line



Notes
 1. Data Sources: See Figure 4-6 Mapsheet Index notes

Project Location
 Chenango, Delaware, & Otsego Counties, NY

Client/Project
 Jennison Transmission Solution Project
 NYSEG CLCPA Program

Figure No.
4-6

Title
**Delineated Wetlands & Streams
 Mapsheet 18 of 102**

Prepared by AB on 2024-02-08
 TR by DG on 2024-07-30
 IR by AS on 2024-10-18

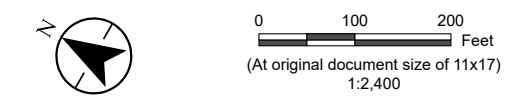
213415070 REVA

U:\213415070\gis_cad\gis_project1\permitting\figure\Antioe\VII\Exhibit_4\213415070_JTS_Environmental_Impacts\213415070_JTS_Exhibit_Environmental_Impacts.aprx Revised: 2024-11-11 By: abhattaral



Jennison Transmission Solution Project

- Proposed Right-of-Way
- Field-Delineated Feature**
- Wetland Continuation Line
- Delineated Stream
- Delineated Wetland – Federal Jurisdiction
- Delineated Wetland – Non-Jurisdiction
- Mapsheet Match Line



Notes
 1. Data Sources: See Figure 4-6 Mapsheet Index notes

Project Location
 Chenango, Delaware, & Otsego Counties, NY

Client/Project
 Jennison Transmission Solution Project
 NYSEG CLCPA Program

Prepared by
 AB on 2024-02-08
 TR by DG on 2024-07-30
 IR by AS on 2024-10-18

213415070 REVA

Figure No.
4-6

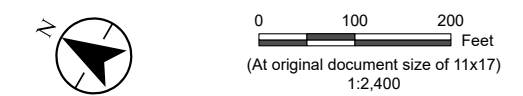
Title
Delineated Wetlands & Streams
Mapsheet 19 of 102

U:\213415070\gis_cad\gis_project1\permitting\figure\Article VII\Exhibit_4\213415070_JTS_Environmental_Impacts\Impacts.aprx Revised: 2024-11-11 By: abhattaral



Jennison Transmission Solution Project

- Proposed Right-of-Way
- Field-Delineated Feature**
- Wetland Continuation Line
- Delineated Stream
- Delineated Wetland – Federal Jurisdiction
- Mapsheet Match Line
- Road or Highway**
- Local, Neighborhood, Rural or City Street



Notes
 1. Data Sources: See Figure 4-6 Mapsheet Index notes

Project Location
 Chenango, Delaware, & Otsego Counties, NY

Client/Project
 Jennison Transmission Solution Project
 NYSEG CLCPA Program

Figure No.
4-6

Title

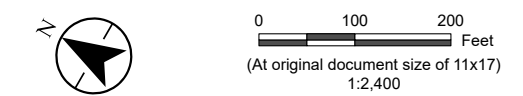
**Delineated Wetlands & Streams
 Mapsheet 20 of 102**

U:\213415070\gis_cad\gis_project1\permitting\figure\Antioe\VII\Exhibit_4\213415070_JTS_Environmental_Impacts\Impacts.aprx Revised: 2024-11-11 By: abhattarai



Jennison Transmission Solution Project

- Proposed Right-of-Way
- Field-Delineated Feature**
- Delineated Stream Line
- Delineated Wetland – Federal Jurisdiction
- Delineated Wetland – Non-Jurisdiction
- Mapsheet Match Line
- Road or Highway**
- Local, Neighborhood, Rural or City Street



Notes
 1. Data Sources: See Figure 4-6 Mapsheet Index notes

Project Location
 Chenango, Delaware, & Otsego Counties, NY

Client/Project
 Jennison Transmission Solution Project
 NYSEG CLCPA Program

Figure No.
4-6

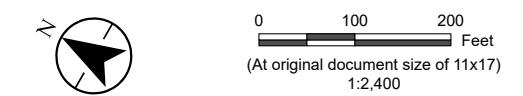
Title
**Delineated Wetlands & Streams
 Mapsheet 21 of 102**

U:\213415070\gis_cad\gis\project1\permitting\figure\Article VII\Exhibit_4\213415070_JTS_Environmental_Impacts\213415070_JTS_Environmental_Impacts.aprx Revised: 2024-11-11 By: abhattaral



Jennison Transmission Solution Project

- Proposed Right-of-Way
- Field-Delineated Feature**
- Wetland Continuation Line
- Delineated Stream
- Delineated Wetland – Non-Jurisdiction
- Mapsheet Match Line



Notes
 1. Data Sources: See Figure 4-6 Mapsheet Index notes

Project Location
 Chenango, Delaware, & Otsego Counties, NY

Client/Project
 Jennison Transmission Solution Project
 NYSEG CLCPA Program

Figure No.
4-6

Title
**Delineated Wetlands & Streams
 Mapsheet 22 of 102**

Prepared by AB on 2024-02-08
 TR by DG on 2024-07-30
 IR by AS on 2024-10-18

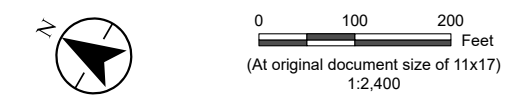
Client/Project 213415070 REVA

U:\213415070\gis_cad\gis_project1\permitting\figure\Article VII\Exhibit_4\213415070_JTS_Environmental_Impacts\213415070_JTS_Environmental_Impacts.aprx Revised: 2024-11-11 By: abhattaral



Jennison Transmission Solution Project

- Proposed Right-of-Way
- Field-Delineated Feature**
 - Culvert
 - Ditch
 - Wetland Continuation Line
 - Delineated Wetland – Federal Jurisdiction
 - Delineated Wetland – Non-Jurisdiction
- Mapsheet Match Line
- Road or Highway**
 - Local, Neighborhood, Rural or City Street



Notes
 1. Data Sources: See Figure 4-6 Mapsheet Index notes

Project Location
 Chenango, Delaware, & Otsego Counties, NY

Client/Project
 Jennison Transmission Solution Project
 NYSEG CLCPA Program

Figure No.
4-6

Title
**Delineated Wetlands & Streams
 Mapsheet 23 of 102**

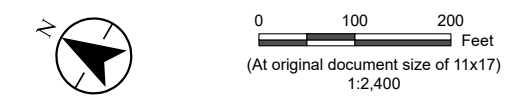
Prepared by AB on 2024-02-08
 TR by DG on 2024-07-30
 IR by AS on 2024-10-18

213415070 REVA

U:\213415070\gis_cad\gis_project1\permitting\figure\Antiole VII\Exhibit_4\213415070_JTS_Environmental_Impacts\213415070_JTS_Environmental_Impacts.aprx Revised: 2024-11-11 By: abhattalari



- Jennison Transmission Solution Project**
- Proposed Right-of-Way
 - Field-Delineated Feature**
 - Wetland Continuation Line
 - Delineated Wetland – Federal Jurisdiction
 - Delineated Wetland – Non-Jurisdiction
 - Mapsheet Match Line
 - Road or Highway**
 - Local, Neighborhood, Rural or City Street



Notes
 1. Data Sources: See Figure 4-6 Mapsheet Index notes

Project Location
 Chenango, Delaware, & Otsego Counties, NY

Client/Project
 Jennison Transmission Solution Project
 NYSEG CLCPA Program

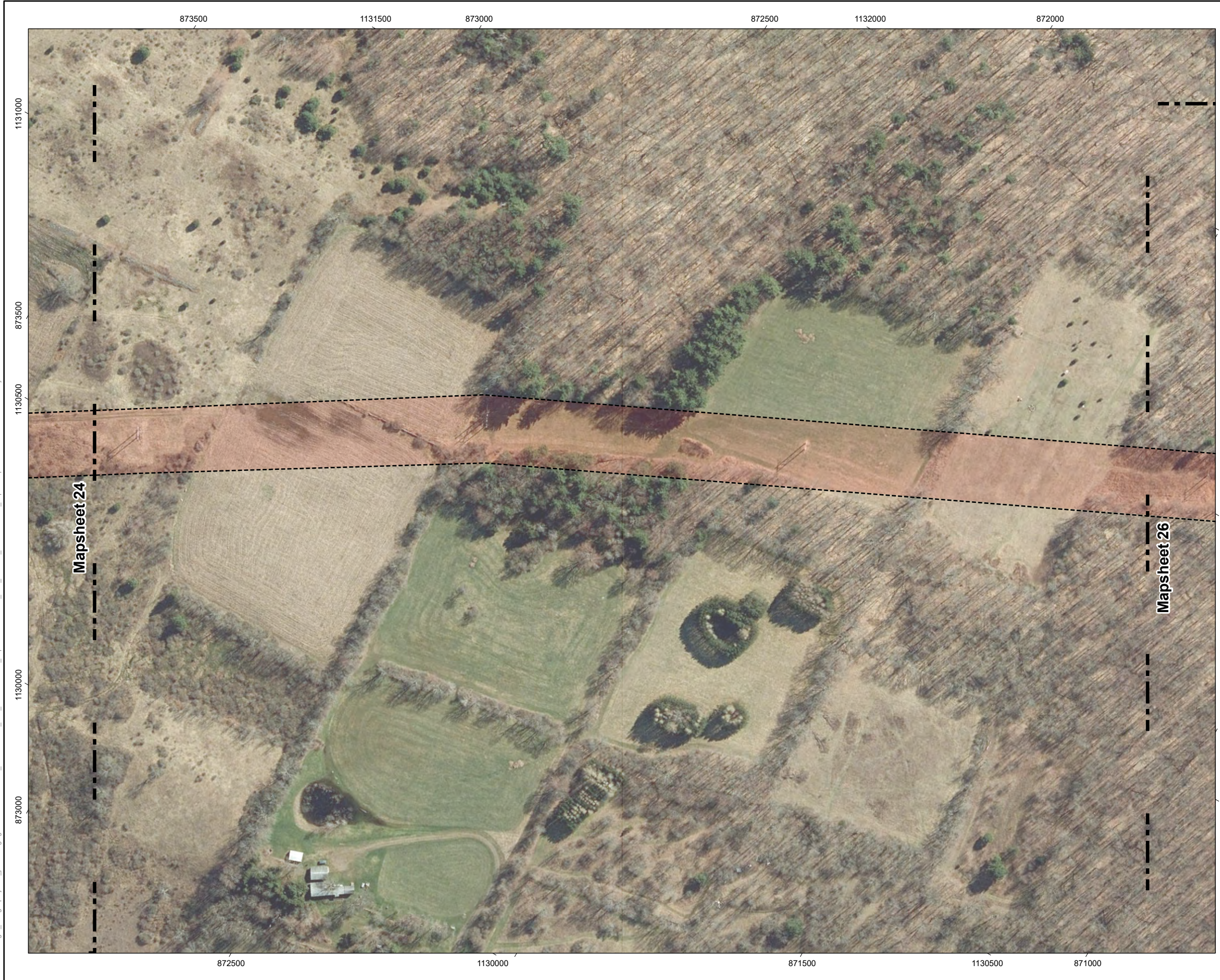
Prepared by AB on 2024-02-08
 TR by DG on 2024-07-30
 IR by AS on 2024-10-18

213415070 REVA

Figure No.
4-6

Title
Delineated Wetlands & Streams
Mapsheet 24 of 102

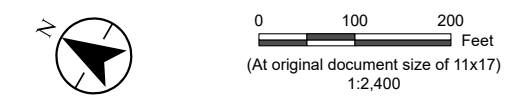
U:\213415070\gis_cad\gis\project1\permitting\figure\Article\VI\Exhibit_4\213415070_JTS_Environmental_Impacts\213415070_JTS_Environmental_Impacts.aprx Revised: 2024-11-11 By: abhattaral



Jennison Transmission Solution Project

Proposed Right-of-Way

Mapsheet Match Line



Notes
 1. Data Sources: See Figure 4-6 Mapsheet Index notes

Project Location
 Chenango, Delaware, & Otsego Counties, NY

Client/Project
 Jennison Transmission Solution Project
 NYSEG CLCPA Program

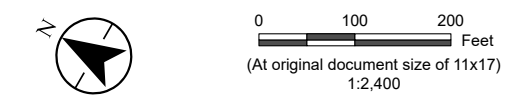
Figure No.
4-6

Title
**Delineated Wetlands & Streams
 Mapsheet 25 of 102**

U:\213415070\gis_cad\gis_project1\permitting\figure\Antioch\11\Exhibit_4\213415070_JTS_Environmental_Impacts.aprx Revised: 2024-11-11 By: abhattaral



- Jennison Transmission Solution Project**
- Proposed Right-of-Way
 - Field-Delineated Feature**
 - Wetland Continuation Line
 - Delineated Wetland – Non-Jurisdiction
 - Mapsheet Match Line
 - Road or Highway**
 - Local, Neighborhood, Rural or City Street



Notes
 1. Data Sources: See Figure 4-6 Mapsheet Index notes

Project Location
 Chenango, Delaware, & Otsego Counties, NY

Client/Project
 Jennison Transmission Solution Project
 NYSEG CLCPA Program

Prepared by
 AB on 2024-02-08
 TR by DG on 2024-07-30
 IR by AS on 2024-10-18

Client/Project
 213415070 REVA

Figure No.
4-6





Title
Delineated Wetlands & Streams
Mapsheet 26 of 102

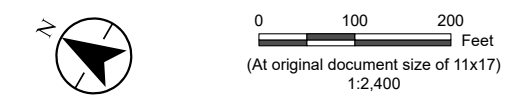
U:\213415070\gis_cad\gis\project1\permitting\figure\Antioe\VII\Exhibit_4\213415070_JTS_Environmental_Impacts\Impacts.aprx Revised: 2024-11-11 By: abhattalal

U:\213415070\gis_cad\gis\project1\permitting\figure\Article VII\Exhibit_4\213415070_JTS_Environmental_Impacts\213415070_JTS_Environmental_Impacts.aprx Revised: 2024-11-11 By: abhattalal



Jennison Transmission Solution Project

-  Proposed Right-of-Way
- Field-Delineated Feature**
-  Wetland Continuation Line
-  Delineated Wetland – Non-Jurisdiction
-  Mapsheet Match Line



Notes
 1. Data Sources: See Figure 4-6 Mapsheet Index notes

Project Location
 Chenango, Delaware, & Otsego Counties, NY

Client/Project
 Jennison Transmission Solution Project
 NYSEG CLCPA Program

Figure No.
4-6

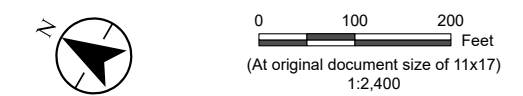
Title
4-6

**Delinedated Wetlands & Streams
Mapsheet 27 of 102**



Jennison Transmission Solution Project

- Proposed Right-of-Way
- Field-Delineated Feature
- Delineated Wetland – Non-Jurisdiction
- Mapsheet Match Line



Notes
 1. Data Sources: See Figure 4-6 Mapsheet Index notes

Project Location
 Chenango, Delaware, & Otsego Counties, NY

Client/Project
 Jennison Transmission Solution Project
 NYSEG CLCPA Program

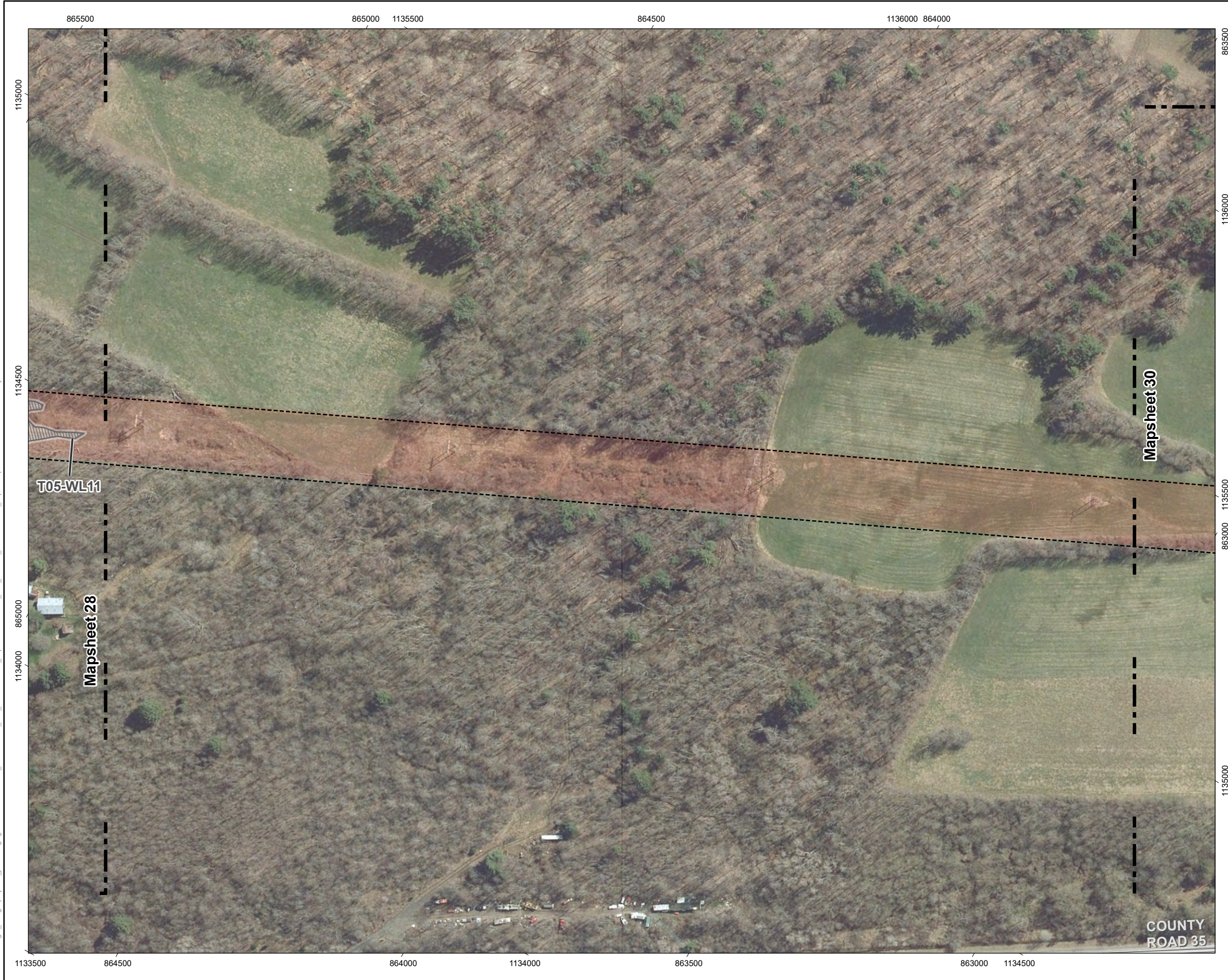
Prepared by
 AB on 2024-02-08
 TR by DG on 2024-07-30
 IR by AS on 2024-10-18

Client/Project
 213415070 REVA

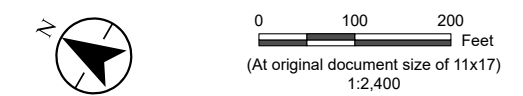
Figure No.
4-6

Title
Delineated Wetlands & Streams
Mapsheet 28 of 102

U:\213415070\gis_cad\gis\project1\permitting\figure\Antiole\VI\Exhibit_4\213415070_JTS_Environmental_Impacts\aprx_2024-11-11 By: abhattaral



- Jennison Transmission Solution Project**
- Proposed Right-of-Way
 - Field-Delineated Feature**
 - Delineated Wetland – Non-Jurisdiction
 - Mapsheet Match Line
 - Road or Highway**
 - Local, Neighborhood, Rural or City Street



Notes
 1. Data Sources: See Figure 4-6 Mapsheet Index notes

Project Location
 Chenango, Delaware, & Otsego Counties, NY

Client/Project
 Jennison Transmission Solution Project
 NYSEG CLCPA Program

Prepared by AB on 2024-02-08
 TR by DG on 2024-07-30
 IR by AS on 2024-10-18

Client/Project 213415070 REVA

Figure No.
4-6

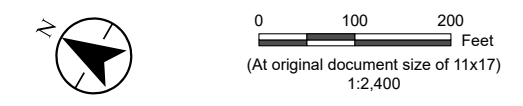
Title
Delineated Wetlands & Streams
Mapsheet 29 of 102

U:\213415070\gis_cad\gis_project1\permitting\figure\Article VII\Exhibit_4\213415070_JTS_Environmental_Impacts.aprx Revised: 2024-11-11 By: abhattalal



Jennison Transmission Solution Project

- Proposed Right-of-Way
- Field-Delineated Feature**
 - Delineated Stream Line
 - Wetland Continuation Line
 - Delineated Wetland – Federal Jurisdiction
 - Delineated Wetland – Non-Jurisdiction
- Mapsheet Match Line
- Road or Highway**
 - Local, Neighborhood, Rural or City Street



Notes
 1. Data Sources: See Figure 4-6 Mapsheet Index notes

Project Location
 Chenango, Delaware, & Otsego Counties, NY

Client/Project
 Jennison Transmission Solution Project
 NYSEG CLCPA Program

Prepared by AB on 2024-02-08
 TR by DG on 2024-07-30
 IR by AS on 2024-10-18

Client/Project 213415070 REVA




Figure No.
4-6

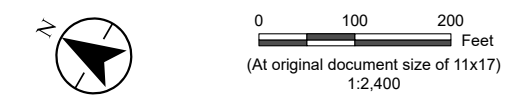
Title
Delineated Wetlands & Streams
Mapsheet 30 of 102

U:\213415070\gis_cad\gis_project\1_permitting\figure\Antiole\11\Exhibit_4\213415070_JTS_Environmental_Impacts.aprx Revised: 2024-11-11 By: abhattaral



Jennison Transmission Solution Project

-  Proposed Right-of-Way
-  Mapsheet Match Line
- Road or Highway**
 -  Local, Neighborhood, Rural or City Street



Notes
 1. Data Sources: See Figure 4-6 Mapsheet Index notes

Project Location
 Chenango, Delaware, & Otsego Counties, NY

Client/Project
 Jennison Transmission Solution Project
 NYSEG CLCPA Program

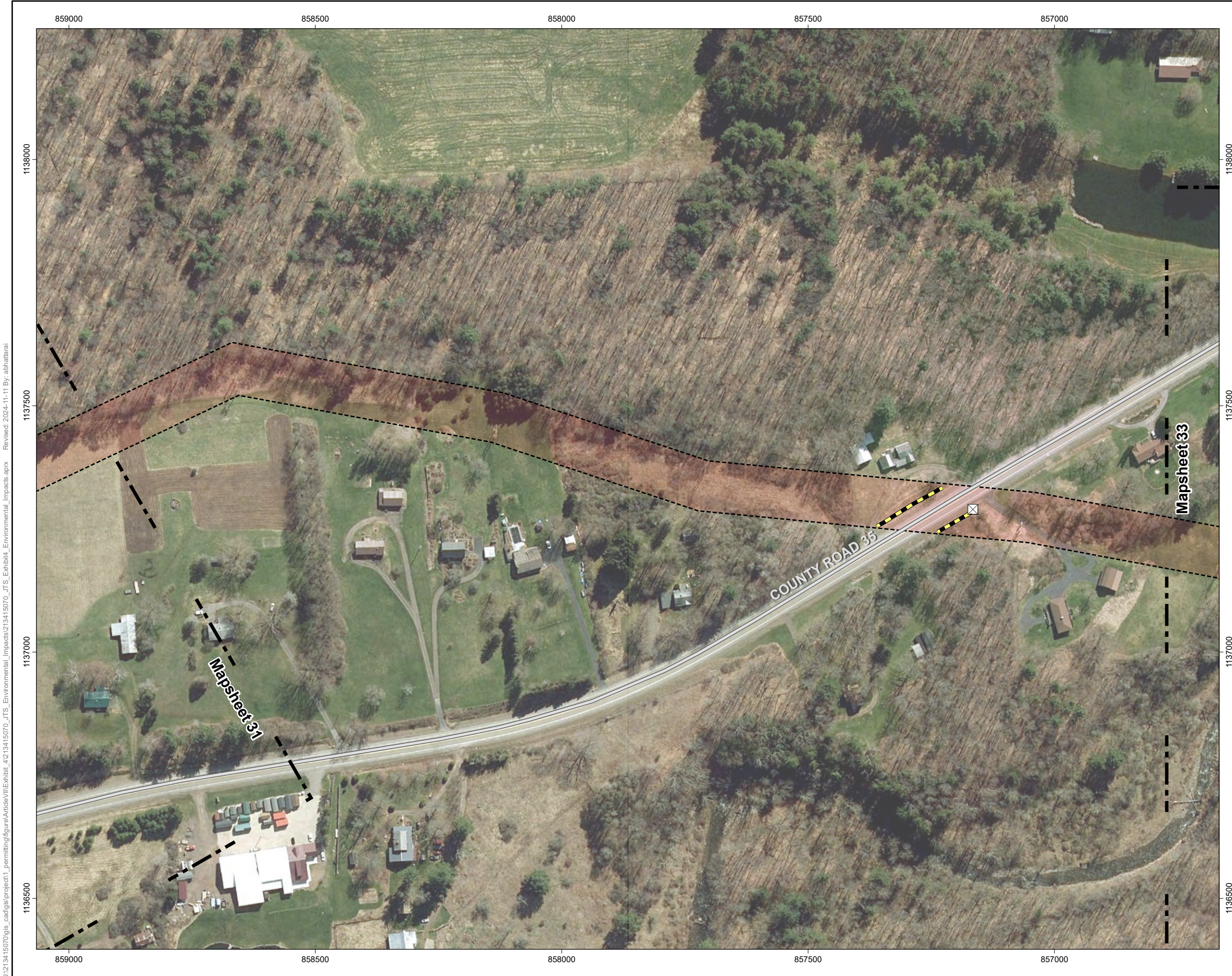
Prepared by AB on 2024-02-08
 TR by DG on 2024-07-30
 IR by AS on 2024-10-18

Client/Project 213415070 REVA

Figure No.
4-6

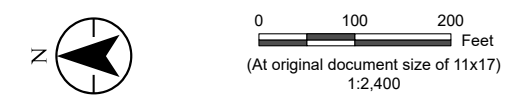
Title
Delineated Wetlands & Streams
Mapsheet 31 of 102

U:\213415070\gis_cad\gis\project1\permitting\figure\Antioch\11\Exhibit_4\213415070_JTS_Environmental_Impacts\1213415070_JTS_Environmental_Impacts.aprx Revised: 2024-11-11 By: abhattalal



Jennison Transmission Solution Project

- Proposed Right-of-Way
- Field-Delineated Feature**
 - Culvert
 - Ditch
 - Mapsheet Match Line
- Road or Highway**
 - Local, Neighborhood, Rural or City Street



Notes
 1. Data Sources: See Figure 4-6 Mapsheet Index notes

Project Location
 Chenango, Delaware, & Otsego Counties, NY

Client/Project
 Jennison Transmission Solution Project
 NYSEG CLCPA Program

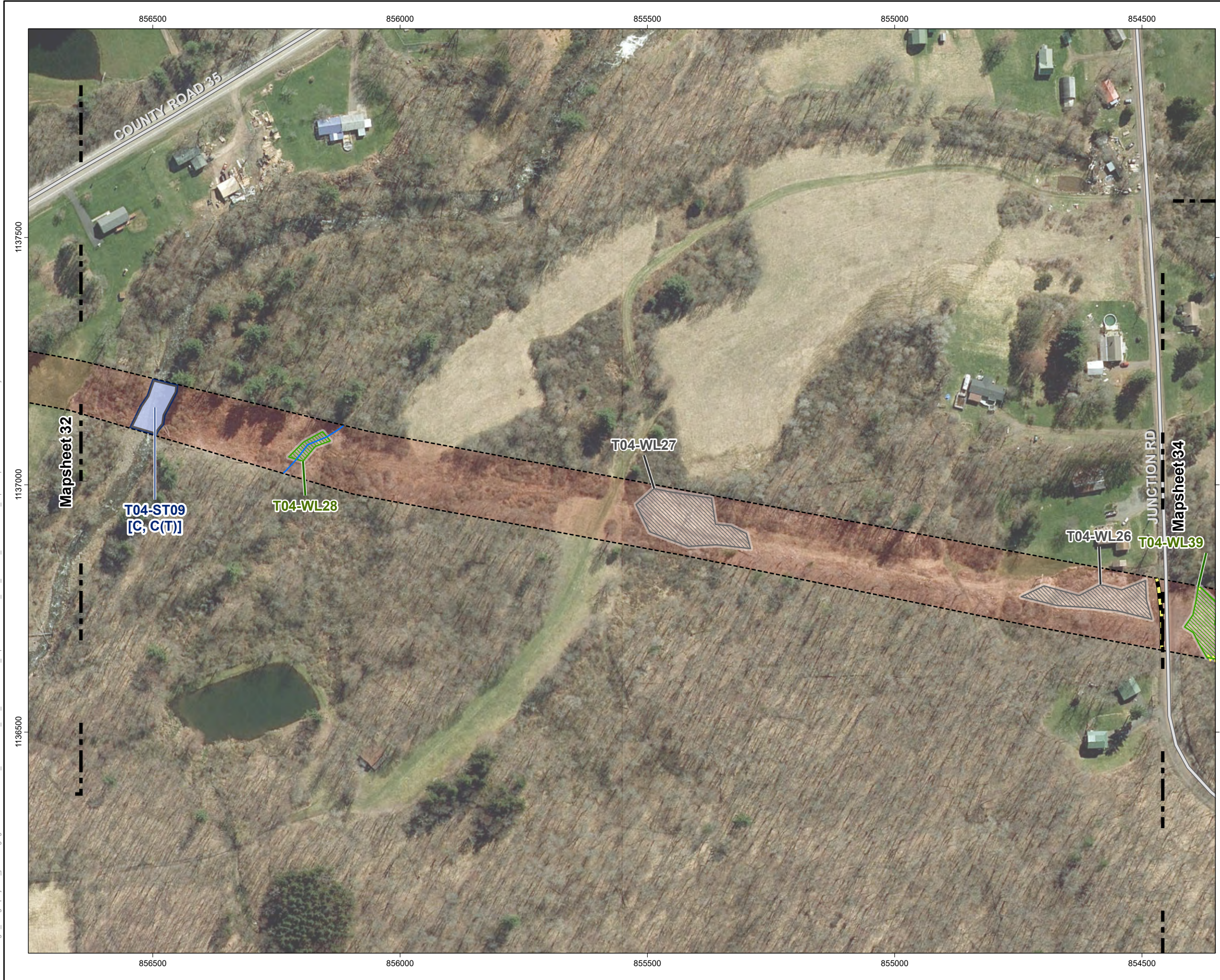
Prepared by AB on 2024-02-08
 TR by DG on 2024-07-30
 IR by AS on 2024-10-18

213415070 REVA

Figure No.
4-6

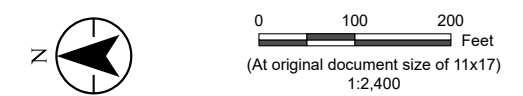
Title
**Delineated Wetlands & Streams
 Mapsheet 32 of 102**

U:\213415070\gis_cad\gis\project1\permitting\figure\Antioch\11\Exhibit_4\213415070_JTS_Environmental_Impacts\113415070_JTS_Exhibit_Environmental_Impacts.aprx Revised: 2024-11-11 By: abhattalari



Jennison Transmission Solution Project

- Proposed Right-of-Way
- Field-Delineated Feature**
- Ditch
- Delineated Stream Line
- Wetland Continuation Line
- Delineated Stream - State Protected (Class, Standard)
- Delineated Wetland – Federal Jurisdiction
- Delineated Wetland – Non-Jurisdiction
- Mapsheet Match Line
- Road or Highway**
- Local, Neighborhood, Rural or City Street



Notes
 1. Data Sources: See Figure 4-6 Mapsheet Index notes

Project Location
 Chenango, Delaware, & Otsego Counties, NY

Client/Project
 Jennison Transmission Solution Project
 NYSEG CLCPA Program

Prepared by AB on 2024-02-08
 TR by DG on 2024-07-30
 IR by AS on 2024-10-18

213415070 REVA

Figure No.
4-6

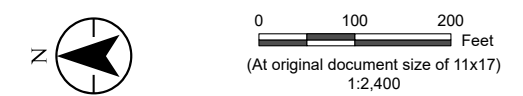
Title
Delineated Wetlands & Streams
Mapsheet 33 of 102

U:\213415070\gis_cad\gis\project1\permitting\figure\Antiole\11\Exhibit_4\213415070_JTS_Environmental_Impacts\213415070_JTS_Environmental_Impacts.aprx Revised: 2024-11-11 By: abhattalari



Jennison Transmission Solution Project

- Proposed Right-of-Way
- Field-Delineated Feature**
- Delineated Stream Line
- Wetland Continuation Line
- Delineated Wetland – Federal Jurisdiction
- Mapsheet Match Line
- City or Town Boundary
- Road or Highway**
- Local, Neighborhood, Rural or City Street



Notes
 1. Data Sources: See Figure 4-6 Mapsheet Index notes

Project Location
 Chenango, Delaware, & Otsego Counties, NY

Client/Project
 Jennison Transmission Solution Project
 NYSEG CLCPA Program

Figure No.
4-6

Title
**Delineated Wetlands & Streams
 Mapsheet 34 of 102**

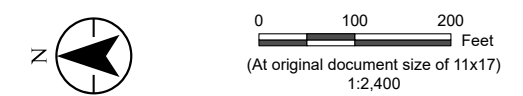
U:\213415070\gis_cad\gis\project1\permitting\figure\Article VII\Exhibit_4\213415070_JTS_Environmental_Impacts\213415070_JTS_Environmental_Impacts.aprx Revised: 2024-11-11 By: abhattaral

U:\213415070\gis_cad\gis_project1\permitting\figure\Antioch\11\Exhibit_4\213415070_JTS_Environmental_Impacts\213415070_JTS_Environmental_Impacts.aprx Revised: 2024-11-11 By: abhattaral



Jennison Transmission Solution Project

- Proposed Right-of-Way
- Field-Delineated Feature**
- Wetland Continuation Line
- Delineated Stream
- Delineated Wetland – Non-Jurisdiction
- Mapsheet Match Line
- City or Town Boundary



Notes
 1. Data Sources: See Figure 4-6 Mapsheet Index notes

<i>Project Location</i> Chenango, Delaware, & Otsego Counties, NY	<i>Prepared by</i> AB on 2024-02-08 TR by DG on 2024-07-30 IR by AS on 2024-10-18
<i>Client/Project</i> Jennison Transmission Solution Project NYSEG CLCPA Program	213415070 REVA

Figure No.
4-6

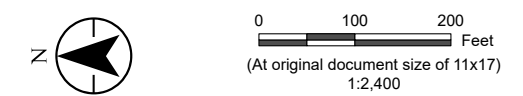
Title

**Delineated Wetlands & Streams
Mapsheet 35 of 102**



Jennison Transmission Solution Project

- Proposed Right-of-Way
- Field-Delineated Feature**
- Delineated Stream Line
- Wetland Continuation Line
- Delineated Wetland – Federal Jurisdiction
- Mapsheet Match Line
- Road or Highway**
- Local, Neighborhood, Rural or City Street



Notes
 1. Data Sources: See Figure 4-6 Mapsheet Index notes

<i>Project Location</i> Chenango, Delaware, & Otsego Counties, NY	<i>Prepared by</i> AB on 2024-02-08 TR by DG on 2024-07-30 IR by AS on 2024-10-18
<i>Client/Project</i> Jennison Transmission Solution Project NYSEG CLCPA Program	<i>213415070 REVA</i>

Figure No.
4-6

Title

**Delineated Wetlands & Streams
 Mapsheet 36 of 102**

U:\213415070\gis_cad\gis_project\1_permitting\figure\Article\11\Exhibit_4\213415070_JTS_Environmental_Impacts.aprx Revised: 2024-11-11 By: abhattaral